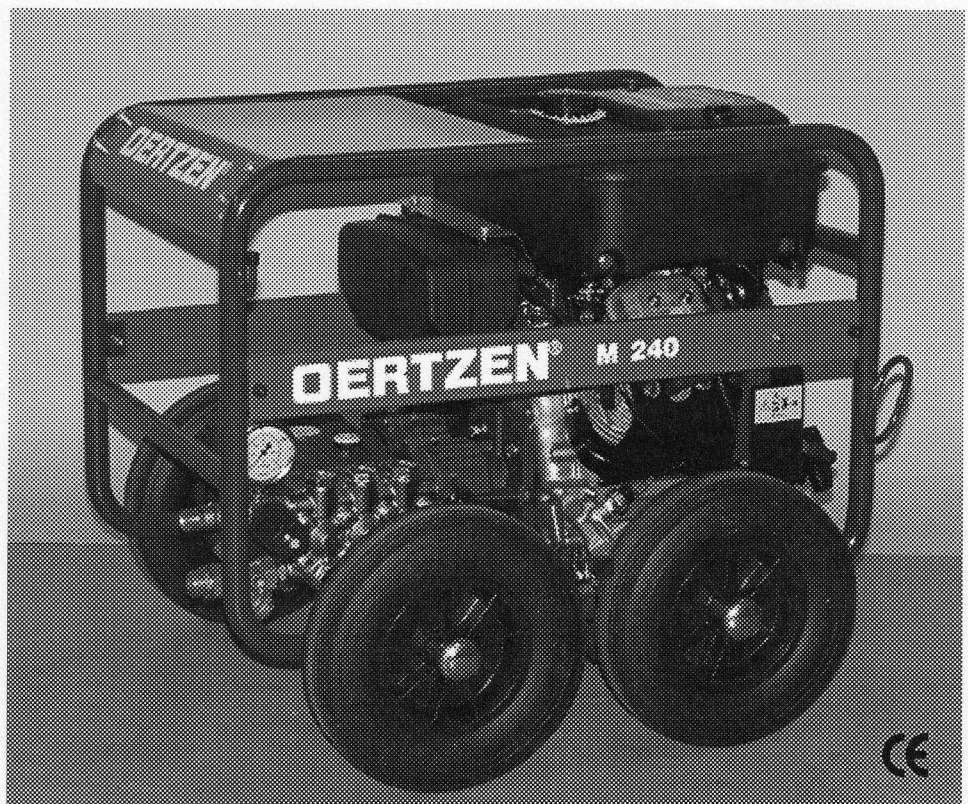
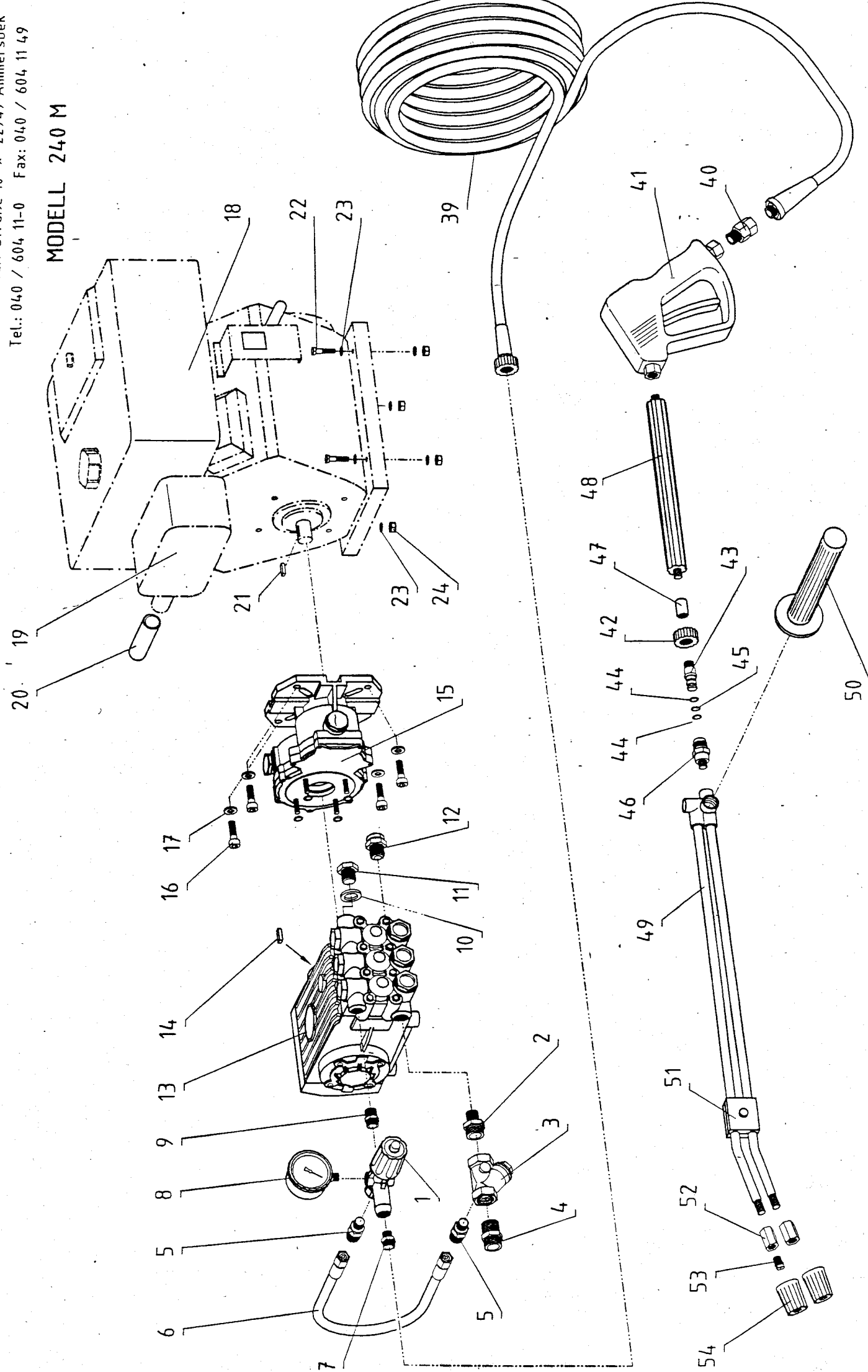


Ersatzteilliste

M 240



MODELL 240 M



Ersatzteilliste / Spare Part List

Nr. 3028

Typ/Baugrp. M240 MOTOR PUMPE WASSERFÜHRUNG

Seite 1

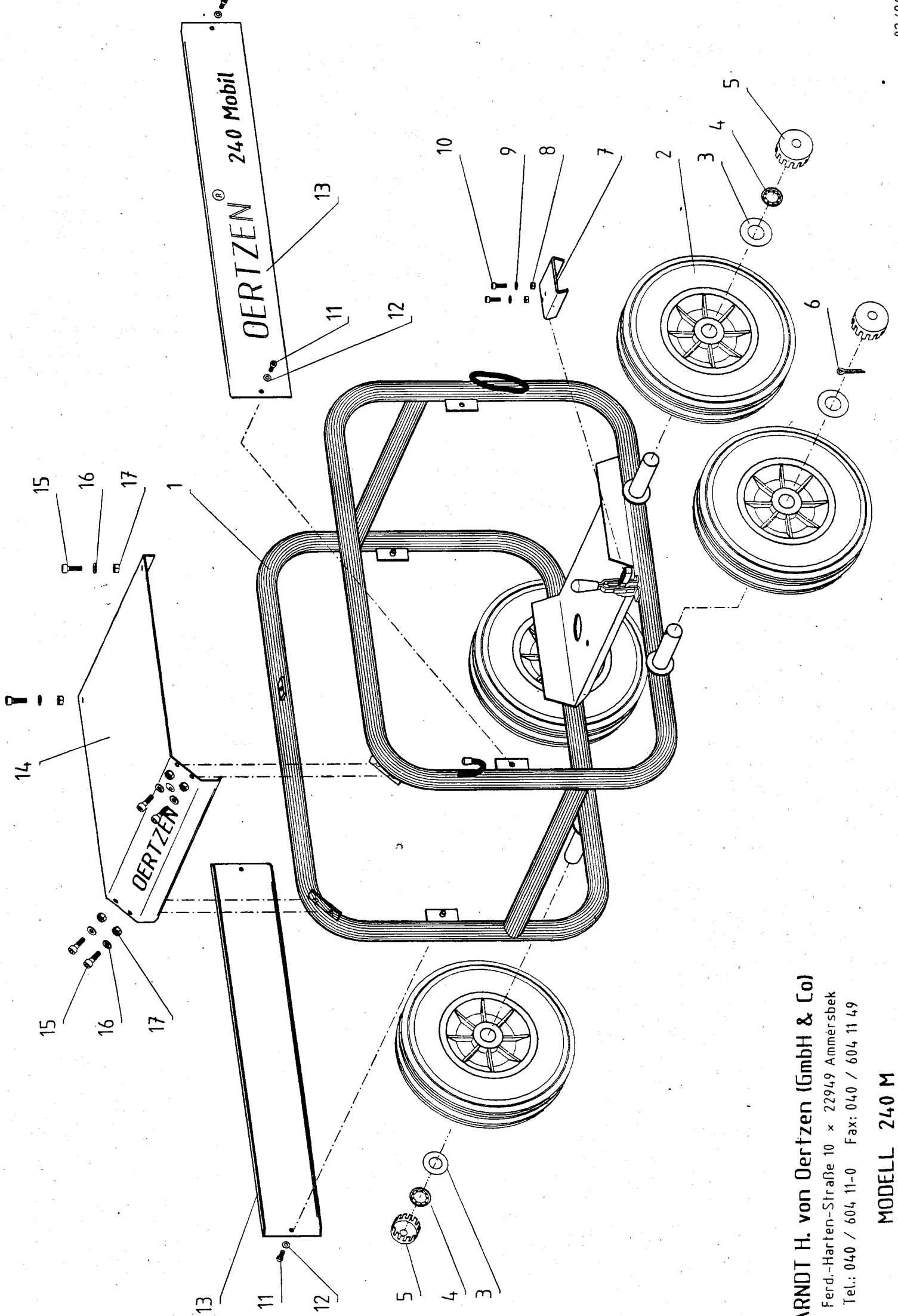
Model/Group M240 Engine Pump Waterline

Datum 21-02-03



... for a cleaner world

Pos. Pos.	Nummer Part #	Stk pcs	Bezeichnung	Description
1	10304302	1	HD-STEUERVENTIL MIT INJ. 2,1mm	Unloader Valve w. Injector 2,1
	10702023	1	m PVC-SCHLAUCH 6mm TRANSPARENT	Transparent Hose 6mm per m
	10104043	1	CHEM-SIEB OHNE RÜCKSCHL.VENT.	Detergt.Strainer w.o.FootValve
2	10003023	1	REDUZIERNIPPEL 3/4" Mx1/2" M MS	Reduct. Nipple 3/4"x1/2" Brass
3	10104055	1	SCHRAEGSITZSIEB 3/4" M.1/4" BOHR	Filter 3/4" w.1/4" ID Thread
4	10003004	1	DOPPELNIPPEL 3/4" MM KURZ MS	Double Nipple 3/4" short Brass
5	11030134	2	EINSCHRAUBNIPPEL 1/4"xM16x1,5K	Male Stud Connect.1/4"xM16x1,5
6	10701068	1	UMLAUFSCHLAUCH 265mm	Circulation Hose 265mm (E's)
7	10703133	1	HV-ANSCHLUSSNIPPEL 3/8" a x OE2	Connector Nipple 3/8"x M22x1,5
8	10406040	1	STANDMANOMETER 0-400bar K	Pressure Gauge 0-400 bar (Glyc)
9	10002022	1	DOPPELNIPPEL 3/8" MM ST VZ	Double Nipple Steel 3/8"
10	10220047	1	DICHTRING ALU	Metal Seal 3/8"
11	10226026	1	STOPFEN 3/8" PUMPE MS	Brass Plug 3/8" Pump
12	10306086	1	THERMOVENTIL 63°C m. NIPPEL	ThermoValve 63°C w. Barb
	10306091		THERMOVENTIL 60°C n.A.KURZ	Thermovalve 60°C/140°F (new)
	10306089		RUECKSCHLAGVENTIL f10306091/94	Check-Valve for 10.306.091/094
13	10220000	1	HD-PUMPE 17l/240bar 1.450	HP-Pump 17l/min 240bar Pump see Part List #4500
14	10217132	1	PASSFEDER 8x 7x25 UNI6604/A	Key 8x7x25
15	10220100	1	UNTERSETZERGETRIEBE 14KW/2,2:1	Reduction Gearbox 14kW/2,2:1
16	10220114	4	SCHRAUBE 5/16"x1"x24UNF	Bolt 5/16" x 1" / 24gg.
17	10006314	4	FEDERRING A 8 VZ	Lock Washer A 8
18	31294442	1	VANGUARD 14PS/10,3kW V-MOTOR	Vanguard Engine 14HP/HandStart
	31491657	1	OELDRUCKSCHALTER VANGUARD	OilPressure Switch
19	31808040	1	ED 31807831 AUSPUFF	Muffler 300M
20	10102110	1	SCHALLDAEMPFER-ROHR M240/300	Exhaust Extension
21	31992004	1	KEIL (LANG) (60,3 MM)	Long Key (60,3mm)
22	10006141	4	SECHSKANTSCHRAUBE M 8x 30	Hexagon Bolt M 8 x 30
23	10006314	8	FEDERRING A 8 VZ	Lock Washer A 8
24	10006304	4	SECHSKANTMUTTER M 8	Hexagon Nut M 8
39	10702064	1	PANZERJET 10m SCHL.600bar ISO	PANZERJET HP Hose 10m 600bar ISO
40	10708050	1	ENTDRALLUNGSGELENK 330bar	HP-Hose Swivel 330bar
41	10700001	1	HD-SICH-PISTOLE 330bar ISOGRIF	HP-Safety Pistol 330bar, w.Grip =Pos. 41-45,47,48,
42	10703130		HV-MUTTER ROT MS OE2/330bar	Hand Nut M22x1,5 330bar
43	10700110		STECKNIPPEL DREHB.1/4"A MAENNL	Male Nipple rotatable 1/4"M
44	11120188		O-RING 10,00x2,00	Q-RING 10,00x2,00
45	11200117		BACKUP-RING TEFLON 10,7x14/1mm	Back-up Ring Teflon
46	10700100	1	WECHSELNIPPEL 1/4"A WEIBL.DREH	Female Nipple rotatable 1/4"M
47	10002067		MUFFE 1/4" WW STVZ	Sleeve 1/4"
48	10704116		ISOLIERGRIF 300mm OE2/OE2	Insulated Handle 300mm w.2xOE2
49	10700022	1	DOPPELLANZE 660mm/DRUCKREG. VA	DoubleWand 660mm/Pressreg.INOX
50				Part of Pos.49
51				Part of Pos.49
52				Part of Pos.49
53	10742338	1	HIP-STRAHLDUESE 2338(05)	HIP Nozzle 2338 (05)
54	10710102		DUESENSCHUTZ 2-TEILIG	Nozzle Protection (2parts)
	99000300		ARBEITSEINHEITEN PRODUKTION	WorkingUnits Production
	99000160		KLEIN-/DICHTMATERIAL	Small Parts/Sealing Material



ARNDT H. von Oertzen GmbH & Co
 Ferd.-Harten-Straße 10 x 22949 Ammersbek
 Tel.: 040 / 604 11-0 Fax: 040 / 604 11 49

MODELL 240 M

Ersatzteilliste / Spare Part List

Typ/Baugrp. M240 RAHMENANLAGE

Model/Group M240 Main Frame Arrangement

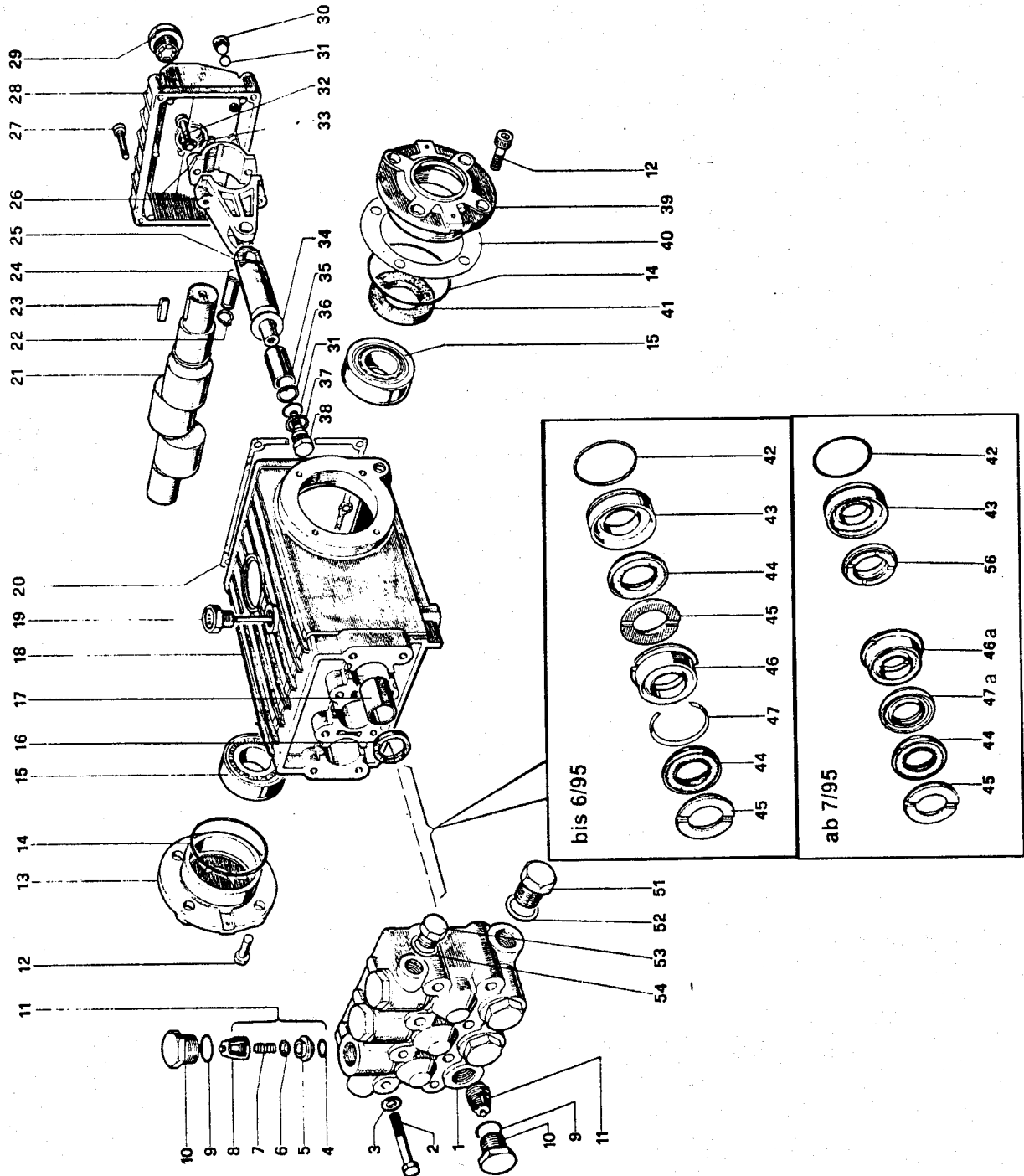
Nr. 3029

Seite 1

Datum 21-02-03

... for a cleaner world 

Pos. Pos.	Nummer Part #	Stk pcs	Bezeichnung	Description
1	10102283	1	RAHMENANLAGE M240	MainFrame M240
2	10102207	4	RAD 275mm 240M/300/380E	Wheel 240M/300/380E
3	10101092	4	STARLOCK-KAPPE 25mm	StarLock Cap 25mm
7	10102215	1	BREMSPLATTE	BrakeElement 200/240/300/380E
8	10006303	2	SECHSKANTMUTTER M 6	Hexagon Nut 6mm metric
9	10006313	2	FEDERRING A 6 VZ	Lock Washer 6mm Zinc plated
10	10006132	2	SECHSKANTSCHRAUBE M 6x 25	Hexagon Bolt M 6x 25 metric
11	10006129	4	SECHSKANTSCHRAUBE M 6x 18	Hexagon Bolt M 6x 18
12	10217154	4	UNTERLEGSCHLEIBE A 6	Washer 6,2mm
13	10102284	2	SEITENBLECH M240	Side Panel M240
14	10102285	1	STINBLECH M240 (LANG)	Front Panel M240
15	10218133	6	INBUSSCHRAUBE M 8x 16	Allen Screw M 8 x 16
16	10006314	6	FEDERRING A 8 VZ	Lock Washer A 8
17	10006304	6	SECHSKANTMUTTER M 8	Hexagon Nut M 8
	10802003	***	1 SPEZIAL-HYPOID-PUMPENÖL OSP	1 OSP Special Hypoid Pump Oil
	10802005	1,2	1 OSM SPEZIAL-MOTORENÖL (LOSE)	1 OSM Special Engine Oil
	10601035	3	LABEL "OERTZEN" 280mm	Label "OERTZEN" 280mm
	10601060	1	LABEL "STRAHL-WARNHINWEIS"	Label "Blaster - Warning"
	10601062	1	LABEL "1.OELWECHSEL"PUMPE RUND	Label "1.Oil Change" Pump rd
	10601039	2	LABEL "VERBRENNUNGSGEFAHR"	Label "Hot Surface"
	99000300		ARBEITSEINHEITEN PRODUKTION	WorkingUnits Production



Ersatzteilliste / Spare Part List

Typ/Baugrp. E200/240 M240/300 HDL Pumpe

Model/Group E200/240 M240/300 UHP Pump

Nr. 4500

Seite 1

Datum 28-09-00



Pos.	Nummer	Stk	Bezeichnung	Description
Pos.	Part #	pcs		
1	10220001	1	ZYLINDERKOPF 280bar	Cylinder Head 280bar(chemNick)
2	10218102	8	SPEZIALSCHRAUBE M 8X70/10K	Special Screw M 8x 70/10K
3	10216114	8	FAECHERSCHEIBE A 8,4	Serrated Lockwasher
4	13500129	6	O-RING 17,13x2,62	O-Ring
4-8				see Pos.11
9	10216215	6	O-RING 20,24x2,62 Sonder	O-Ring Special
10	10220007	5	VENTILSTOPFEN CHEM.VERN.	Valve Plug (chemNick)
10a	10220008	1	VENTILSTOPFEN 1/4"MANOBOHRG.CV	Valve Plug w.1/4"Thread Manom.
11	10216106	6	VENTIL 60°C VA ABS	Pump Valve (1pc.) max. 60°C
	10220096	6	VENTIL 78°C VA RILSAN	Pump Valve (1pc.) max. 78°C
12	10218133	8	INBUSSCHRAUBE M 8x 16	Allen Screw M 8 x 16
				E-Models:
12a	10006140	4	SECHSKANTSCHRAUBE M 8x 25	Hexagon Bolt M 8 x 25
12b	10006314	4	FEDERRING A 8 VZ	Lock Washer A 8
13	10220010	1	LAGERGEHAEUSEDECKEL	Crankcase Cover
14	10220009	2	O-RING 67,95x2,62 Sonder	O-Ring 67,95x2,62 70sh
15	10220011	2	KEGELROLLENLAGER 32206	Roller Bearing 32206
16	10216216	3	WEDI 22x32x 5,5 S	Seal Ring S 22x35x5,5 Spec.
17	10220013	3	FUEHRUNGSBUCHSE LAGERMETALL	Guiding Sleeve (Bearing Metal)
18	10220021	1	KURBELGEHAEUSE 10220000pp	Pump Crankcase 10220000 etc.
19	10220025	1	OELPEILSTAB	Oil Dip Stick
20	10220026	1	O-RING 133,02x2,62 Sonder	O-Ring 133,02 x 2,62 Special
21	10220031	1	KURBELWELLE 241/min (50Hz)	Crankshaft 241/min (50Hz) E200/240, Mobil300, S323, HDL
21	10220030	1	KURBELWELLE 171/min (50Hz)	Crankshaft 171/min (50Hz) E200-16/Mobil240
21	10220032	1	KURBELWELLE 241/min (2W-ENDEN)	Crankshaft 241/min doubleshaft
22	10220035	6	SEEGERRING	Retainer Ring
23	10217132	1	PASSFEDER 8x 7x25 UNI6604/A	Key 8x7x25
24	10220033	3	GELENKBOLZEN	Joint Bolt
25	10220036	3	FUEHRUNGSKOLBEN VA GEHAERTET	Guiding Piston (hardened, INOX)
26	10220037	3	PLEUEL CPL.	Connecting Rod cpl.
27	10217135	5	INBUSSCHRAUBE M 6x 30	Allen Screw M 6 x 30
28	10220040	1	GETRIEBEDECKEL	Crankcase Lid
29	10217128	1	OELSCHAUGLAS	Oil Eye
30	10216124	1	ABLASS-SCHRAUBE	Drain Plug
31	10216220	1	O-RING 10,82x1,78	O-Ring 10,82x1,78 Special
32	10220038	6	INBUSSCHRAUBE M 8x 35	Allen Screw M 8 x 35
33	10217003	6	FAECHERSCHEIBE A8,4x13x0,8	Lock Washer 8,4x13x0,8
34	10217138	3	KUPFERSCHEIBE 14x28,0x0,5	Copper Disc 14x28x0,5
	10217140	3	KUPFERSCHB.14x28x0,5 CHEM.NICK	Copper Disc 14x28x0,5 ChemNi
35	10218149	3	KERAMIK-PLUNGER 20mm (280bar)	Ceramic Plunger 20mm (280bar)
36	10216221	3	BACKUP-RING F. O-RING (TEFLON)	Backup Ring f. O-Ring Teflon
37	10217156	3	KUPFERSCHEIBE 14x18,5x0,5	Copper Disc 14x18,5x0,5
38	10217141	3	KOLBENSCHRAUBE EDELSTAHL	Plunger Bolt (INOX)
39	10220048	1	ANTRIEBS-LAGERFLANSCH	Bearing Flange (Driving End)
				2 pcs.w. Double End Crankshaft
40	10220041	1	DISTANZSCHEIBE Ms 0,1mm	Distance Disc Brass 0,1mm
41	10220042	1	WEDI 30x55x 7 Sonder	Oil Seal 30x55x 7 Special
42	10218150	3	O-RING 34,65x1,78 Sonder	O-Ring 34,65 x 1,78 Special
43	10218151	3	BODENRING 20/200	Bottom Ring 20/280

Ersatzteilliste / Spare Part List

Nr. 4500

Typ/Baugrp. E200/240 M240/300 HDL Pumpe

Seite 2

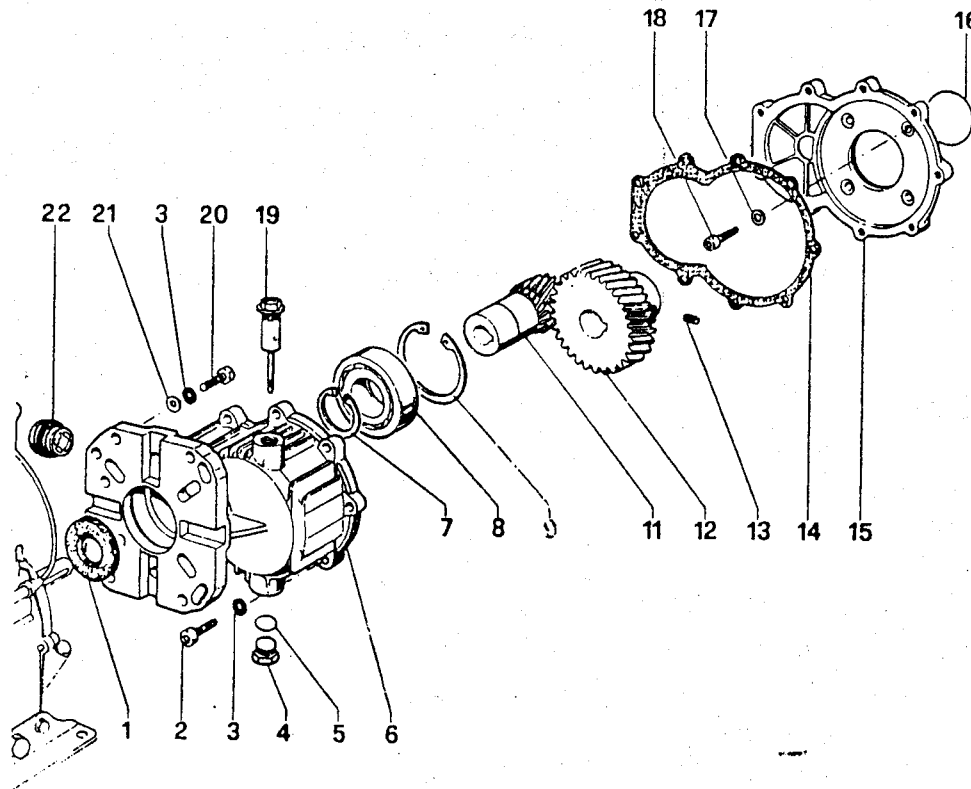
Model/Group E200/240 M240/300 UHP Pump

Datum 28-09-00



Pos.	Nummer	Stk	Bezeichnung	Description
Pos.	Part #	pcs		
44	10218153	3	MANSCHETTE 20mm 280bar (240E)	Seal (reinforced) 20mm/280bar
44a	10220099	3	SAUGDICHTUNG 78°C	Suction Composite Seal 78°C
				6 pcs. until 06/1995
45	10218154	3	SPREIZRING 20/200	Spreader Ring 20mm
				6 pcs. until 06/1995
46	10218152	3	ED 10218156+..157 STUETZRING	Support Ring 20/280 <07/95
46a	10218156	3	STÜTZRING 20/280 >06/95	Support Ring 20/280 >06/95
47	10220043	3	LONG-LIFE-RING <07/95	LongLife Ring red <07/95
47a	10218157	6	RESTOP-RING 20MM(280BAR) >06/95	Restop Ring 20mm(280bar) >06/95
51	10220044	1	STOPFEN 1/2" PUMPE	MS Brass Plug 1/2" Pump
52	10220045	1	DICHTRING ALU	Metal Seal 1/2"
53	10226026	1	STOPFEN 3/8" PUMPE	MS Brass Plug 3/8" Pump
54	10220047	1	DICHTRING ALU	Metal Seal 3/8"
56	10218158	3	NIEDERDRUCK-DICHTUNG >06/95	Suction Seal w. Spreader >06/95
				Ohne Abb./w.o. Illustration:
	10220049	3	MANSCHETTENKIT HARDPARTS 20mm	SealKit 20mm(hardparts)1Piston
	10218155	1	REP.SATZ MANSCH.200E-300M<6/95	Seal Kit 200E-300M <07/95
	10218159	1	REP.SATZ MANSCH.200E-300M>6/95	Seal Kit 200E-300M >06/95
	10000325	1	MP E240/200 UMBAUSATZ (78°C)	Conversion Kit 200/240E 78°C
	10802002		SPEZIAL-HYPOID-PUMPENÖL OSP;5L	OSP Special Pump Oil 5l/1,3USG Füllmenge/Filling 1,2l

Teil-Nr.	Benennung	Kit für Pumpe 10.220.002											
10.218.159	Rep.-Satz	Pos.	45	47	56								
	Manschette	Menge	3	3	3								
10.220.049	Manschetten-Kit	Pos.	42	43	44	45	46	47	56				
	Hard Parts	Menge	1	1	1	1	1	1	1				



Pos. Pos.	Nummer Part #	Stk pcs	Bezeichnung	Description
	10220100		UNTERSETZERGETRIEBE 14KW/2,2:1	Reduction Gearbox 14kW/2,2:1
1	10220104	1	WEDI 40x55x 7 HT	Seal Ring S 40x55x7 HT
2	10217142	9	INBUSSCHRAUBE M 8x 30	Allen Screw M 8 x 30
3	10217003	13	FAECHERSCHEIBE A8,4x13x0,8	Lock Washer 8,4x13x0,8
4	10226026	1	STOPFEN 3/8" PUMPE	MS Brass Plug 3/8" Pump
5	10226025	1	O-RING 13,95x2,62 Sonder	O-Ring 13,95 x 2,62
6	10220107	1	GETRIEBEGEHAEUSE 240/300M/HDL	Housing
7	10220108	1	SPRENGRING	Retainer Ring
8	10220116	1	SPHAER. LAGER SQ 6208	Bearing SQ 6208
9	10220117	1	SPRENGRING	Retaining Ring
11	10220109	1	ANTRIEBSRITZEL 17Z	Drive Gear 17Z
12	10220110	1	GEGENRITZEL GROSS 37Z	Counter Gear large 37 teeth
13	10217145	1	MADENSCHRAUBE M 8x 10/12K	Hollow Set Screw M 8 x 10/12 K
14	10220103	1	GEHAEUSEDICHTUNG GETRIEBE 300M	HousingGasket RedGear 300M/HDL
15	10220102	1	GETRIEBEBEDECKEL F.GETR.323M	Gear Box Cover (300 M)
16	10220111	1	O-RING 58,62x2,62 Sonder	O-Ring 58,62 x 2,62
17	10220105	4	UNTERLEG-DICHTSCHEIBE GETRIEBE	Seal Washer Red.Gearbox 300Mpp
18	10220112	4	INBUSSCHRAUBE M.MEGI-RING(IAD)	Allen Screw w. Gasket
19	10220025	1	OELPEILSTAB	Oil Dip Stick
20	10220114	4	SCHRAUBE 5/16"x25,4mm/24GG.	Bolt 5/16" x 1" / 24gg.
21	10220115	4	SCHEIBE	SCHEIBE
22	10217128	1	OELSCHAUGLAS	Oil Eye